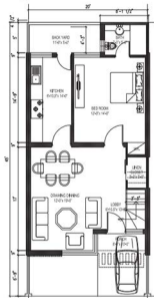
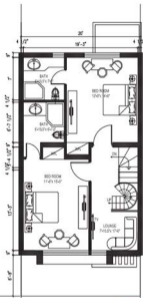


Facing 90 Feet Holland Boulevard

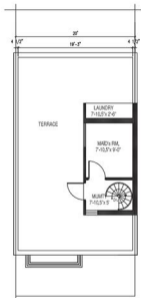


Ground Floor Plan

TOWN HOUSE 4-MARLA
Sufi City, Mandi Baha ud din



Plot Size 22' x 45' (4 Marla)
Ground Floor Area = 705 Sq
First Floor Area = 684 Sq
Mummy Floor Area = 158 Sq
Total Covered Area = 1,547 Sq



Mummy Floor Plan

4 MARLAS DUPLEX VILLAS

TOWN HOUSE
SEE THE DIFFERENCE

TOH-4
SUF-4
MUM-4

For more details, visit our website or call us at 0300-1000000